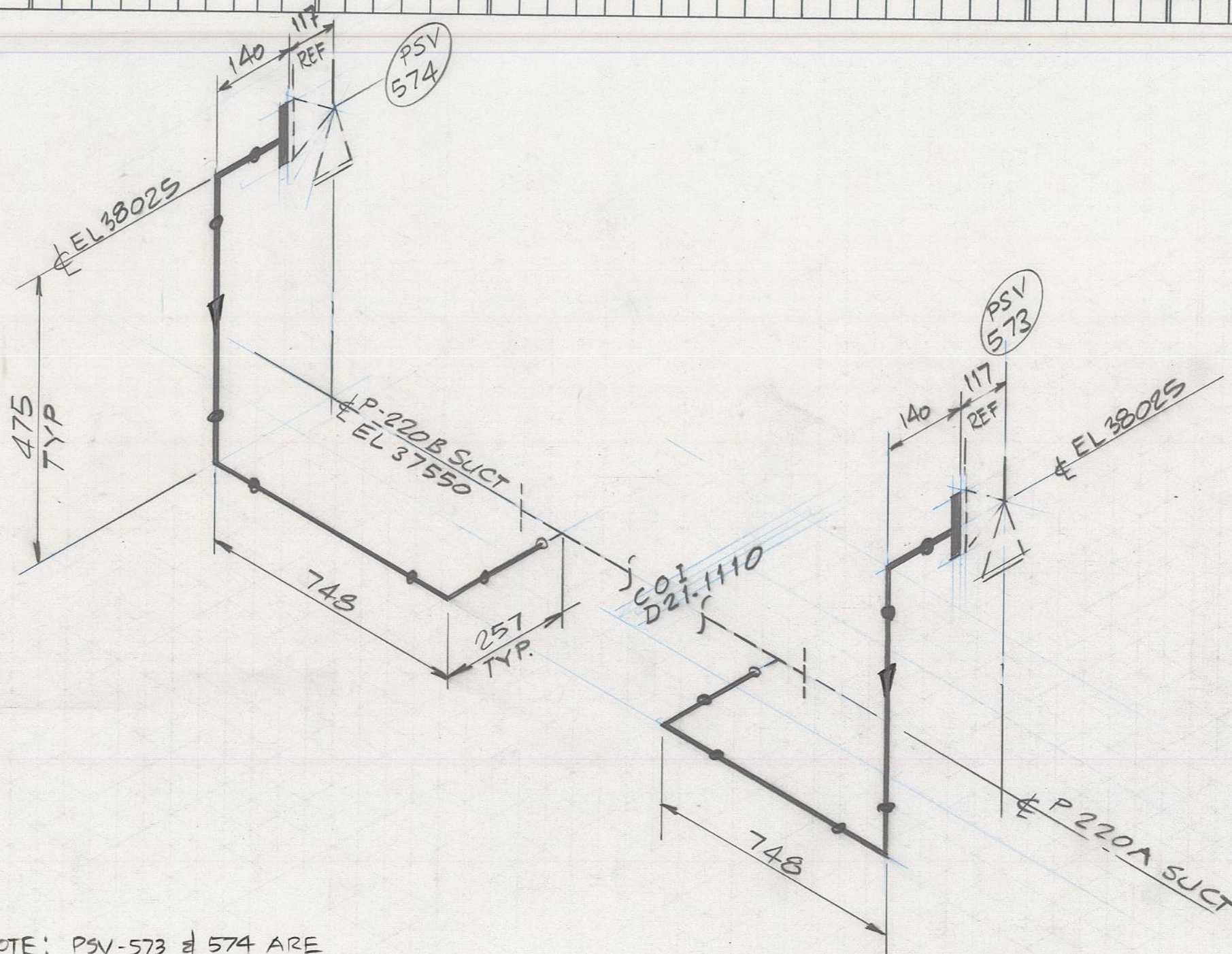


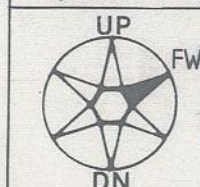
PIPE				VALVES				FLANGES				FITTINGS														S/BOLTS		GASKETS		SPECIALS																																																																																																																																																																																																																																																																																																																																																																																																																																																																																																																																																																																																																																																																																																																																																																																																																																																																																																																																																																																																																																																																																																																																																																																																																																																																																																																																																																																																																																																																																																																																																																										
Size	Sch.	BHP Spec.	Qty. Metre	GATE		GLOBE	CHECK		150# RF WN	SO	BLD			BUTT WELD				SOCKETWELD				SCREWED						5/8" x 85					150# 3THK SPWD						REDUCING FITTINGS, SPECIAL BOLTS & MISCELLANEOUS MATERIAL				QTY.																																																																																																																																																																																																																																																																																																																																																																																																																																																																																																																																																																																																																																																																																																																																																																																																																																																																																																																																																																																																																																																																																																																																																																																																																																																																																																																																																																																																																																																																																																																																																													
																90° LRE	45° LRE	TEE	CAP	90° ELL	45° ELL	TEE	CAP	UN.	COUP.	NIP. P.E.	90° ELL												TEE	CAP.	UN.	COUP.		PLUG	NIP. 2T.E.	NIP. 1T.E.	SPECIAL No.	1st SIZE	1st SCH	2nd SIZE	2nd SCH	DESCRIPTION																																																																																																																																																																																																																																																																																																																																																																																																																																																																																																																																																																																																																																																																																																																																																																																																																																																																																																																																																																																																																																																																																																																																																																																																																																																																																																																																																																																																																																																																																																																																																				
50	80	1A	2.5						2					6																																																																																																																																																																																																																																																																																																																																																																																																																																																																																																																																																																																																																																																																																																																																																																																																																																																																																																																																																																																																																																																																																																																																																																																																																																																																																																																																																																																																																																																																																																																																																																																										</



NOTE: PSV-573 & 574 ARE SUPPLIED BY PUMP VENDOR.

### PAINTING SPEC: SYSTEM 1

O	APPROVED FOR CONSTRUCTION	PM	KR	8.3.94
A	ISSUED FOR TENDER	PPB	L	1.2.94
No.	ALTERATION	BY	CHKd.	DATE
DESIGN:-	PRESS: 1965 kpag TEMP: 38°C	Drawn PPB		29.1.94
TEST:-	SHOP: 2950 kpag FILL:	Chkd. Juma		3.2.94
HYD.		Apprd. KR		3.2.94
REF. DRGS. D20-1111, D10-1061				



DAI HUNG DEVELOPMENT PHASE 1  
REJECT OIL SYSTEM  
LINE 50-1A-WP121

PIRC No. AEO000/03

AREA REJECT OIL DRG. No. 00DD-D21.1111

REV. 0

Số: DH-DR-0242  
(PVEP)  
TỔNG CÔNG TY DKK  
CÔNG TY TD&KTDK